



**NAND**<sup>®</sup>  
EQUIPMENT PVT. LTD.

*IT PAYS TO DEAL WITH AN EXPERT...*



**One Stop Solution!!!**

- DISPLAY COUNTER ○
- KITCHEN EQUIPMENT ○
- CATERING EQUIPMENT ○
- REFRIGERATION EQUIPMENT ○
- TANDOOR ○
- CUSTOMISE SOLUTION ○



## About Us

*Nand Equipments Pvt Ltd was established by Mr. Jatin Shah from Engineering & Management Sector who understood the need of expertise in Food Service Equipment in Hospitality & F & B Industry especially in tailor made stainless steel fabrication in India.*





**Nand Equipments Pvt. Ltd.** has made lasting impression in the Industry through its sheer application of Manufacturing abilities and Innovative Ideas. Through its strong commitment to total customer satisfaction and exceptional quality Nand Equipments Pvt Ltd has reached distinctive heights in Leisure, Hospitality & Catering Industry in India & Abroad.

The success story of Nand Equipments Pvt Ltd has drawn attention from many KECs & Consultants, which has helped us win projects in Asian, European, American & African Countries.

**Mission Statement:**

To be a leading and trusted Kitchen Equipment Manufacturing Company for Hospitality and Food & Beverage Industry offering customized & value based solutions through World Class Technology, Project Management & EPC Services.

**Vision Statement:**

To be a Leader in providing an efficient and safe kitchen with a comfortable environment for an optimum output to Hospitality and Food & Beverage Industry.

**Infrastructure:**

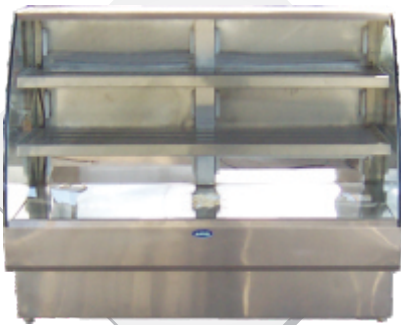
- x CNC Turret Punch Press ( Amada – Japan)
- x CNC Press Brake ( Amada – Japan)
- x Laser Cutting & Marking Machine
- x Mig/Tig Argon-Arc-Gas Welding Machine from Miller
- x Shearing Machine
- x Fabrication Line
- x Charging Unit for Refrigeration Equipments.

Last but not least Skilled Workers trained by experts from India & Abroad

## Display Counter

Standard Dimensions for Bend Glass Models : 1200 x 650 x 1125 - 1500 x 650 x 1125

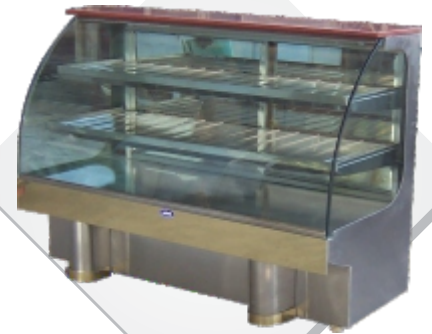
Standard Dimensions for Straight Glass Models : 1200 x 600 x 1125 - 1500 x 600 x 1125



Regular



Junction



Pillar Model



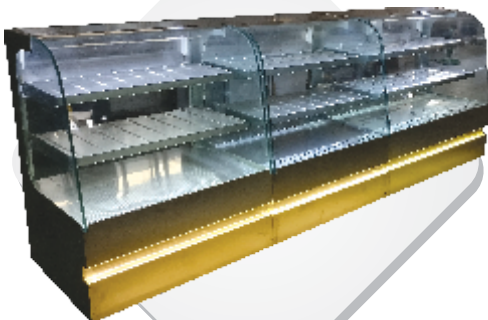
Dezy



Zeel



Mall Sp.



J Band



Heena Indian



Heena Imported



## Display Counter



Double Bend Glass



Neno



Robot



Chat Counter with Umbrella



Canopy



Corner Counter



Cash Counter



Hot Dessert Counter



Multi Station Chat Counter



## Display Counter





## Cooking Range



### Pot Stove

- Use** : Bulk Cooking for Industrial Canteens, Hostel Mess etc...
- Specification** : SS Angle Frame Structure. 40mm Pipe Uprights. 1 Main Burner & 1 Pilot Burner with separate operating valve. S.S. Hairline Matt Finish.
- Dimensions** : 600 x 600 x 450 mm  
750 x 750 x 450 mm  
Can be manufactured as per requirement.
- Technical Data** : **Burner Output:** 54000 BTU (13.625 Kcal/Hr) per main burner.

### Indian Burner Range

- Use** : To cook authentic Indian(Punjabi,Gujarati,Kathwadi) delicacies in portion. Specifically use for A'la Card Orders.
- Specification** : SS Angle Frame Structure. 40mm Pipe Uprights. 1-2-3 Main Burner & 1-2-3 Pilot Burner with separate operating valve. S.S. Hairline Matt Finish. Drip Tray Beneath Burner to prevent Spillage of Food on floor.
- Dimensions** : **Single Burner Range** - 600 x 600 x 850 +150 mm  
**Two Burner Range** - 1200 x 600 x 850 +150 mm  
**Three Burner Range** - 1800 x 600 x 850 + 150 mm  
Can be manufactured as per requirement.
- Technical Data** : **Burner Output:** 54000 BTU (13.625 Kcal/Hr) per main burner.



### Chinese Burner Range

- Use** : To cook authentic Chienese delicacies in portion. Specifically use for A'la Card Orders.
- Specification** : SS Angle Frame Structure. 40mm Pipe Uprights. 2 Main Burner & 2 Pilot Burner with separate operating valve. Drain Channel at back for fast TAT. Drip Tray beneath Burner to prevent Spillage of Food on floor. S.S. Hairline Matt Finish.
- Dimensions** : **Single Burner Range** - 600 x 600 x 850 +300 mm  
**Two Burner Range** - 1200 x 600 x 850 +300 mm  
**Three Burner Range** - 1800 x 600 x 850+3000 mm  
Can be manufactured as per requirement.
- Technical Data** : **Burner Output:** 54000 BTU (13.625 Kcal/Hr) per main burner.



## Cooking Range

### Continental Burner Range

- Use** : To cook authentic Continental-Italian-Mexican delicacies & Sauces in portion or Bulk. Specifically use for A'la Card Orders or Bulk Sauces Production.
- Specification** : SS Angle Frame Structure. 40mm Pipe Uprights. 4 Main Burner & 2 Pilot Burner with separate operating valve. Drip Tray beneath Burner to prevent Spillage of Food on floor. S.S. Hairline Matt Finish.
- Dimensions** : **Four Burner Range** - 750 x 750 x 850 +150 mm  
**Four Burner Range** - 900 x 900 x 850 +150 mm  
**Six Burner Range** - 1200 x 900 x 850 + 150 mm  
(Also Available with Underneath Oven)
- Technical Data** : **Burner Output:** 54000 BTU (13.625 Kcal/Hr) per main burner.
- Power (Oven)** : 4 KW.



### Combi Ranges

- Use** : It is basically a hybrid version of different burners in single range.
- Specification** : SS Angle Frame Structure. 40mm Pipe Uprights. 2 Main Burner & 2 Pilot Burner with separate operating valve. Drip Tray beneath Burner to prevent Spillage of Food on floor. S.S. Hairline Matt Finish.
- Dimensions** : Two Burner Range - 1200 x 600 x 850 +150 mm  
(1 Indian Burner & 1 Chinese Burner)  
Three Burner Range - 1800 x 600 x 850 +150 mm  
(2 Indian Burners & 1 Chinese Burner)
- Technical Data: Burner Output** : 54000 BTU (13.625 Kcal/Hr) per main burner.



### Chapatti Puffer Plate

- Use** : To cook Fulka Roties.
- Specification** : SS Angle Frame Structure. 40mm Pipe Uprights. 2 Main Burner & 2 Pilot Burner with separate operating valve. 12mm MS Plate with Cast Iron Puffer. S.S. Hairline Matt Finish.
- Dimensions** : 900 x 600 x 850 - 600 x 600 mm Plain Plate & 300 x 600 mm - Puffer  
1200 x 600 x 850 - 900 x 600 mm Plain Plate & 300 x 600mm - Puffer  
1500 x 600 x 850 - 1200 x 600 mm Plain Plate & 300 x 600mm - Puffer
- Technical Data** : **Burner Output:** 54000 BTU (13.625 Kcal/Hr) per main burner.





## Cooking Range

### Dosa Plate

- Use** : To cook Dosa/Paratha/ sauté French or Japanese delicacies
- Specification** : SS Angle Frame Structure. 40mm Pipe Uprights. 2 Main Burner & 1 Pilot Burner with separate operating valve. 12mm MS Plate S.S. Hairline Matt Finish.
- Dimensions** : 900 x 600 x 850  
1200 x 600 x 850  
1500 x 600 x 850

**Technical Data : Burner Output:** 54000 BTU (13.625 Kcal/Hr) per main burner.



### Griddle Plate

- USE** : Multi Cooking for Parathas, Tikkas , Fish & Grills.
- Specification** : SS Angle Frame Structure. 40mm Pipe Uprights. 2 Main Burner & 2 Pilot Burner with separate operating valve. 12mm MS Plate ( Plain or Groved or Combined). Grease Through for Collection of Excess Oil. S.S. Hairline Matt Finish.
- Dimensions** : 1800 x 600 x 850
- Technical Data** : Burner Output: 54000 BTU (13.625 Kcal/Hr) per main burner.



Trolley

Table Top

### Rumali Roti Tava

- Use** : To Prepare the Excellent Quality Rumali Roti.
- Specification** : Heavy Duty SS Structure.
- Dimensions** : 375 Ht x 425 Dia.
- Technical Data** : Burner Output: 54000 BTU (13.625 Kcal/Hr) per main burner.

## Fast Food Machinery



### Salamander (Toaster)

**Dimension:** Outer Size: 700x400x350  
Chamber Size: 450x275x250

**Power :** 3 Kw

### Choco Dip

**Size Available :** Small - 200x360x230  
Large - 310x360x230

**Power :** 200W (Small)  
400W (Large)



### Wafel Cone

**Size Available :** 280x360x200

**Power :** 1600W





## Fast Food Machinery



### Deep Fat Fryer

**Specification:** S.S. Oil Chamber  
Top Panels with Heating element

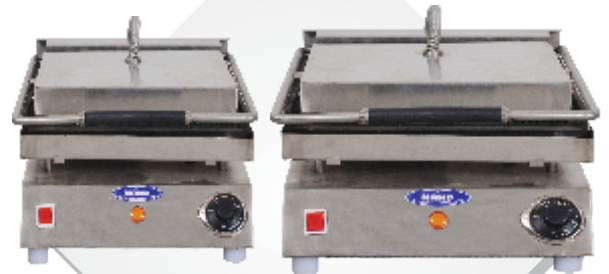
**Capacity:** 5 ltr, 8 ltr, 10 ltr and  
Standing Model available in 20 ltr

**Power :** 1800 W

### Sandwich Griller

**Size Available:** Jumbo Sandwich Griller-325x400  
Regular Sandwich Griller-275x350

**Power :** 3 Kw (Jumbo)  
2 Kw Regular)



### Pizza Oven

**Capacity:** Pizza oven: 6" - 4 Pizza  
Pizza oven: 6" - 6 Pizza

**Dimension:** Outer Size: 700x400x350  
Chamber Size: 450x275x250

**Power :** 3 Kw

## Catering Equipment & Machineris

### Catering Burner

**Specification:** Heavy Duty Catering Burners for Quality Output and less operational Cost, with S.S. Hairline Matt Finish.

**Dimension:** 250x250 mm  
300x300 mm  
350x350 mm  
400x400 mm



Burner 14"x14"

Round Burner

### Catering Burner

**Specification:** Heavy Duty Catering Burners for Quality Output and less operational Cost, with S.S. Hairline Matt Finish.

**Dimension:** 400x400



Chinese Burner

Rumali Roti

### Dosa Plate / Chappati Puffer

**Specification:** Heavy Duty Catering Hot/Dosa/Chapati Puffer Plates for Quality Output and less operational Cost, with S.S. Hairline Matt Finish.

**Dimension:** 750x450x375



## Catering Equipment & Machineries



### Idli / Dhokla / Khaman Steamer

**Specification:** Made up of Heavy Gauge SS304 Material for Quality Output and less operational Cost, with S.S. Hairline Matt Finish.

**Dimension:** 610x490x900 (6 Tray)  
400x400 (Tray Size)  
610x490x1220 (10 Tray)  
400x400 (Tray Size)

**Available:** Electric or Gas Operated

### Catering BBQ

**Specification:** Heavy Duty Charcoal or Wood operated BBQ with heavy base for Charcoal or Wood fire and 25mm cerawool insulated body. S.S. Hairline Matt Finish.

**Dimension:** 750x375x375  
750x375x600 (Canopy Size)



### Popcorn Machine

**Specification:** Heavy Duty 800 gms electric operated kettle with SS 304 enclosure

**Power:** 2 Kw





## Catering Equipment & Machineries

### Soup BM

**Specification:** Special Design for Banquet to cater soup

**Capacity:** 4 Containers with 8 Ltr Capacity each

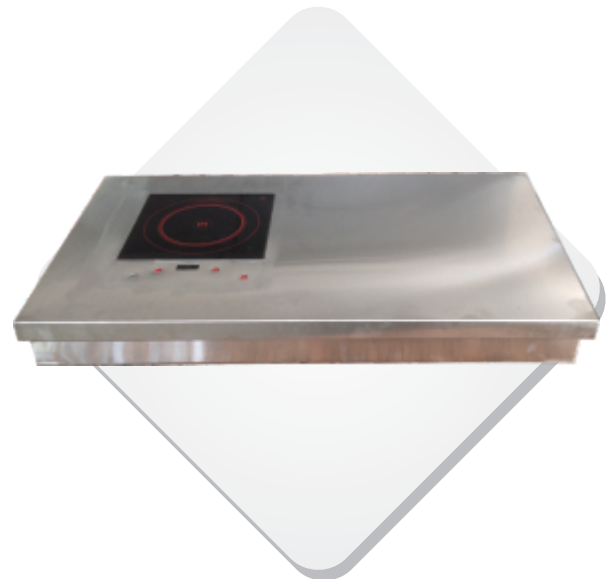
**Power:** 2 Kw



### Catering Induction

**Specification:** Branded Induction Plate with enclosure

**Dimension:** As per requirement



### Industrial Mixer

**Specification:** Heavy Duty Industrial Mixer with customized copper winded motor

**Capacity :** Available in 3 Ltr. Jar & 5 Ltr. Jar



## Catering Equipment & Machineries

### Pulveriser

**Specifications:** Heavy Duty Motor with set of grills for desired output.

**Capacity of Motor:** 2 HP, 3 HP, 5 HP



### Meat Mincer

**Capacity of Motor:** 1HP



### Vegetable Cutter / Potato Peeler

**Specification:** Specially designed motor for heavy duty use

**Capacity:** 25 Kg / hr (Vegetable Cutter)  
10 Kg & 20 Kg / charge (Potato Peeler)

**Imported brands like Robo coupe & Serman is also available**



## Catering Equipment & Machineries

### Wet Grinder

**Specification:** Specially Crafted Stone (from coimbatore) in SS 304 Grade Bowl Assembled at Nand for Quality Output

**Capacity:** 7 ltr, 10 ltr



### Shawarma Machine

**USE:** For Rosting Chicken, Beef, Paneer, etc...

**Dimension:** 600x750x900

**Also available in small size**



### Dough Kneeder

**Specification:** Uniform Mixing, Heavy Kneading  
S.S. Bowl & Solid Rod Arm  
Speed varying by Motor

**Capacity:** 10 Kg, 20 Kg, 30 Kg





## Catering Equipment & Machineries



Snack Trolley with BM



Counter BM



Soil Dish Collecting Stand



Grain Bin



Bain Maire with Tray Rail



Idli Steamer



American  
Corn Trolley



Pani Puri Live



Table Top Bain Marie

## Sink - Rack - Trolley

### Pot Wash Sink

**Specification:** S.S. Angle Structure for Strength

**Dimension:** 700x700x850+150  
1400x700x850+150  
2000x700x850+150

**Also Available:** Single Pot Wash & Three Pot Wash



### Sink Unit

**Specification:** S.S. Angle Structure for Strength

**Dimension:** 600x600x850+150  
1200x600x850+150  
1800x600x850+150

**Also Available:** Single Sink Unit & Three Sink Unit

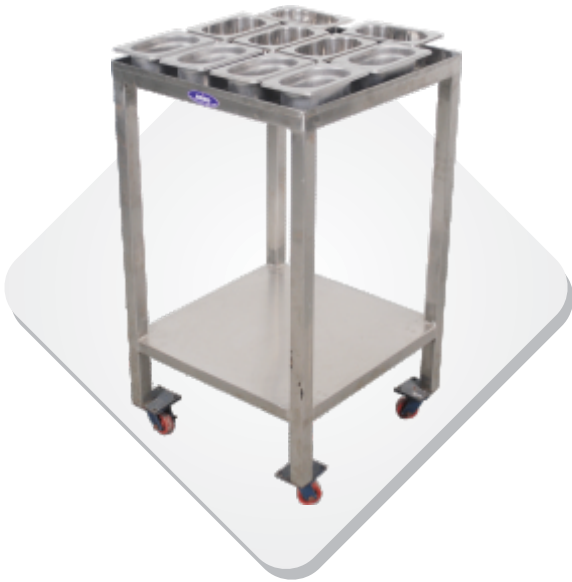


### Soak Sink Trolley

**Specification:** SS Angle Structure with Heavy Duty Wheels for easy movement and sturdiness. S.S. Hairline Matt Finish.

**Dimension:** 900x600x500

## Sink - Rack - Trolley



### Masala Trolley

**Specification:** 9 Masala Container with Lid

**Dimension:** 600x600x850

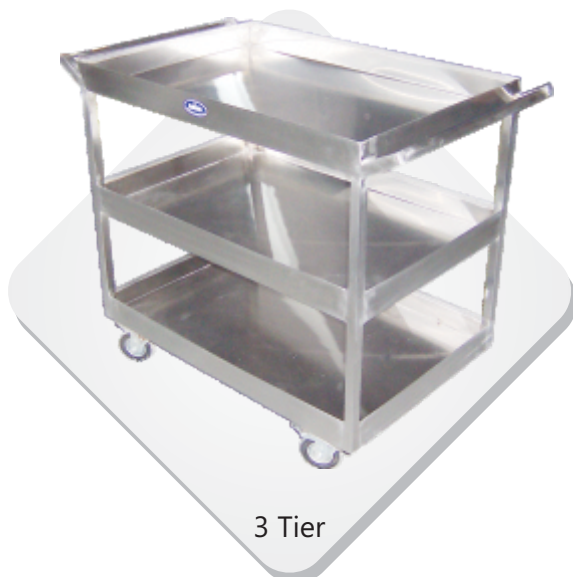
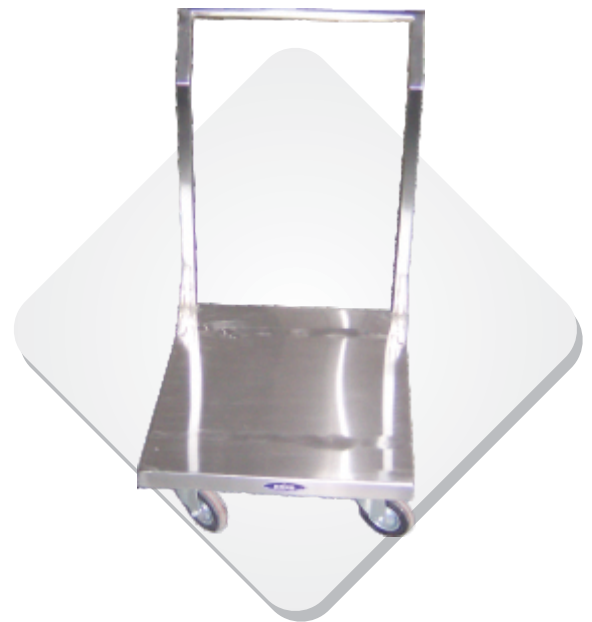
**Manufactured as per the requirement**

### Platform Trolley

**Specification:** S.S. Angle frame structure and Heavy Duty Wheel for sturdiness. S.S. Hairline Matt Finish.

**Dimension:** 900x600x750

**Manufactured as per the requirement & Weight Load**



### Utility Trolley

**Specification:** Heavy Duty Wheel for easy movement and sturdiness. S.S. Hairline Matt Finish.

**Dimension:** 900x600x750

**Also Available:** 2 Tier / 3 Tier

**Manufactured as per the requirement**



## Sink - Rack - Trolley

### Multi Purpose Trolley

**Specification:** 1/1 GN compatible

**Dimension:** 400x600x1200



### Plate Warmer Trolley

**Specification:** Heavy Duty Wheel for easy movement and sturdiness

**Dimension:** 600x450x850 (100 Plates)  
450x450x850 (50 Plates)

**Power :** 3 Kw (100 Plates)  
2 Kw (50 Plates)



### Onion / Potato Bin Trolley

**Material :** M.S. / S.S. Structure with high quality wire mesh

**Dimension:** 600x600x750

**Manufactured as per the requirement**



## Sink - Rack - Trolley

### Clean Dish Rack / Storage Rack

**Specification:** Provided with Hat Channel in each shelf

**Dimension:** 900x450x1500 - 4 Tier  
 900x450x1800 - 5 Tier  
 1200x450x1500 - 4 Tier  
 1200x450x1800 - 5 Tier  
 1500x450x1500 - 4 Tier  
 1500x450x1800 - 5 Tier



### Pot Rack

**Specification:** Made up of Argon Welded Heavy Gauge SS 304 Pipe.

**Dimension:**

900x450x1500	900x525x1500 - 4 Tier
900x450x1800	900x525x1800 - 5 Tier
1200x450x1500	1200x525x1500 - 4 Tier
1200x450x1800	1200x525x1800 - 5 Tier
1500x450x1500	1500x525x1500 - 4 Tier
1500x450x1800	1500x525x1800 - 5 Tier



### Tray Rack

**Specification:** As per requirement

**Dimension:** As per requirement



## Sink - Rack - Trolley



Cupboard with Sink



2 Sink with Garbage unit



Vegetable Trolley



Single Sink



Soil Dish Landing Table



Work Table with Sink



Work Table with Sink (LHS)



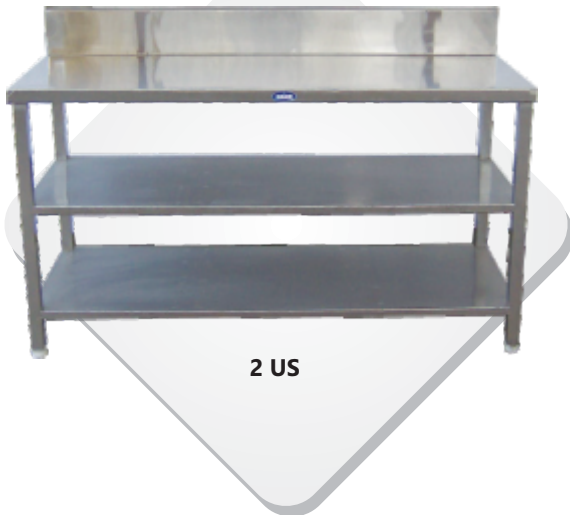
Work Table with Sink (RHS)



Soil Dish Table



## Work & Preparation Table



### Work Table

**Specification:** S.S. Under Shelves (US)  
S.S. Angle Structure for Strength

**Dimension:** 600x600x850+150  
1200x600x850+150  
1500x600x850+150  
1800x600x850+150

**Also Available:** with 1 US, 1 OS & 2 OS  
without Back Splash  
2 side cover or 3 side cover as per requirement

### Pick up Table

**Specification:** Pick Table with 2 Under Shelve  
2 Over Head Shelve

**Dimension:** 1200x600x850  
1500x600x850  
1800x600x850

**Also Available:** with RR system & KOT



### Pick up Table with RR & Hot Case

**Specification:** Pick Table with 2 Under Shelve  
2 Over Head Shelve with 3 side cover

**Dimension:** 1200x600x850  
1500x600x850  
1800x600x850

**Power :** 4 Kw (for hot case)





## *Work & Preparation Table*



**Work Table 2 US**



**Work Table 1 US**



**Chappati Rolling table  
with Marble Top**



**Masala Spreader Table**



**Work Table (Masala)**



**Pick up counter**



**Side Table 2 US**



**Work Table with Cupboard**



**Preparation Table 1 US**

## Bakery Equipment



### Deck Oven

**Specification:** Gas operated/ Electric operated  
Single Deck, Two Deck, Three Deck

**Dimension:** Single Deck - Overall Size : 1225x770x530  
Chamber Size : 865x655x225  
Two Deck - Overall Size : 1225x770x1240  
Chamber Size : 865x655x225  
Three Deck - Overall Size : 1225x770x1540  
Chamber Size : 865x655x225

### Spiral Mixer

**Specification:** Fine & Quick Mixing Easy System

**Capacity:** 5 ltr, 10 ltr, 20 ltr



### Planetary Mixer

**Specification:** High Quality Mixer with 2 speed - 3 speed  
Heavy Gauge SS Bowl

**Capacity:** 20 Ltr, 30 Ltr





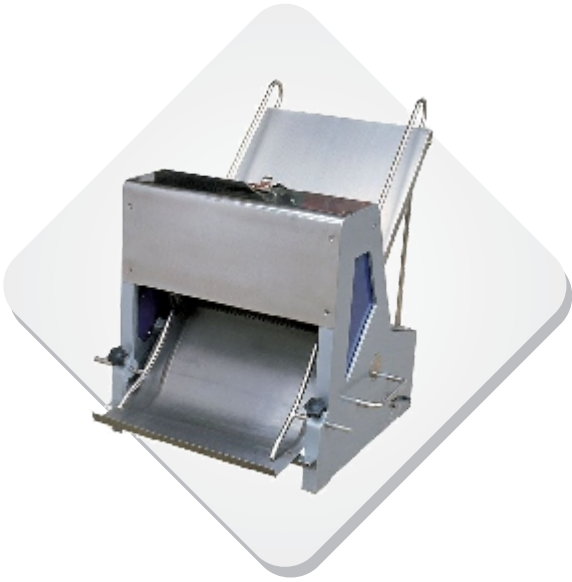
## Bakery Equipment

### Bread Slicer

**Specification:** Ideal Machine to Slice Bread, Toars etc..

**Dimensions:** 650x660x760 (Bread Thickness 12 mm)

**Power:** 0.25 Kw



### Dough Sheeter

**Specification:** Ideal Machine to Make Sheets of Dough for Cake or Bread Making

**Dimensions:** 780x1690x590 (Table Top Model)  
910x1890x590 (Table Top Model)  
760x2000x1040 (Stand Model)  
900x2700x1100 (Stand Model)

**Power:** 0.40 Kw (Table Top)  
0.55 Kw (Stand Model)



### Island Multi-cuisine Setup

## **Bulk Cooking Equipment**

### **Tilting Brat Pan**

**Specification:** Gas Operated - Direct Heating System  
Tilting Type Cooking Pan - Manually Opened Lid

**Brat Pan Ltr.**

**Capacity:** 80 Ltr, 100 Ltr, 120 Ltr, 150 Ltr.



### **Tilting Bulk Cooker**

**Specification:** Gas Operated - Direct Heating System  
Tilting Type Cooking Pan - Manually Opened Lid

**Ltr. Capacity:** 100 Ltr, 150 Ltr, 200 Ltr, 250 Ltr.



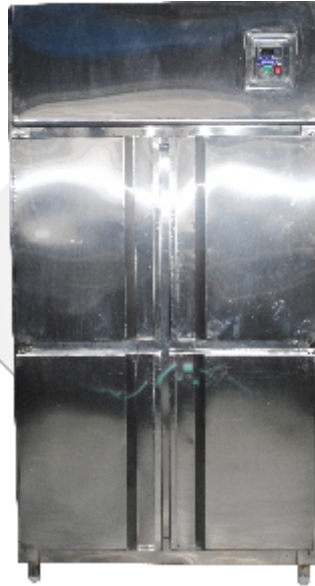
### **Island Multi-cuisine Setup**



## Refrigeration



**Vertical  
Refrigeration  
(2 Door)**



**Vertical  
Refrigeration  
(4 Door)**



**Vertical  
Refrigeration  
(6 Door)**

Model	Description	Capacity ( Ltrs)	Dimension Range	Temperature
NE650	Two Door Vertical Refrigerator	650 Ltr	775x750x2100	0 to -5 Degree
NE760	Four Door Vertical Refrigerator	760 Ltrs	1125x650x2100	0 to -5 Degree
NE850	Six Door Vertical Refrigerator	850 Ltrs	1125x650x2225	0 to -5 Degree

ALSO AVAILABLE IN -18 TO -20 DEGREE TEMPERATURE RANGE  
( STATIC OR FORCE DRAFT TECHNOLOGY)



## Refrigeration



**UCR with Hot & Cold BM**



**UCR with Cold Bm**

Model	Description	Capacity ( Ltrs)	Dimension Range	Temperature
NEUCR72	6 Feet Undercounter Refrigerator	450 Ltrs	1800x750x850	0 to -5 Degree
NEMac60	5 Feet Pizzeria / Macline with 1/6x100mm - 8 Nos GN	350 Ltr	1500x750x1000	0 to -5 Degree
NEMac72	6 Feet Pizzeria / Macline with 1/6x100mm - 9 Nos GN	450 Ltr	1800x750x1000	0 to -5 Degree

ALSO AVAILABLE IN -18 TO -20 DEGREE TEMPERATURE RANGE  
 ( STATIC OR FORCE DRAFT TECHNOLOGY)



**Water Cooler**

Model	Cooling Capacity	Storage Capacity	Glasses Per Hour	No Of Cock	Size (In MM)
15/20	15 Ltr/Hr	15 Ltr	75	1	360x360x1160
20/40	20 Ltr/Hr	20 Ltr	100	1	410x410x1440
40/40	40 Ltr/Hr	40 Ltr	200	1+1	410x410x1440
40/60	40 Ltr/Hr	60 Ltr	200	1+1	410x410x1440
60/60	60 Ltr/Hr	60 Ltr	200	2+1	510x510x1440
60/80	60 Ltr/Hr	80 Ltr	200	2+1	510x510x1440
100/100	100 Ltr/Hr	100 Ltr	400	2+1	560x560x1440
100/120	100 Ltr/Hr	120 Ltr	500	2+1	610x610x1440
150/150	150 Ltr/Hr	150 Ltr	750	2+1	610x610x1440
150/200	150 Ltr/Hr	200 Ltr	1000	2+1	870x870x1800
150/300	150 Ltr/Hr	300 Ltr	1000	2+1	870x870x1800
150/400	150 Ltr/Hr	400 Ltr	1500	2+1	1050x750x1950
500/500	500 Ltr/Hr	500 Ltr	2500	3+1	

## Tandoor

### Clay Tandoor

**Clay Pot Available for:** 100, 150, 200 Ltr Drum as well as for square body Tandoor



### Drum Tandoor

**Specification:** Drum Tandoor with cera wool and flyash insulation for holding temperature for long time

**Available:** M.S. 150 Ltr, 200 Ltr.  
S.S. 150 Ltr, 200 Ltr.



### Square Tandoor

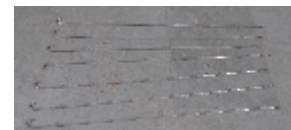
**Specification:** Double wall Tandoor with cera wool and flyash insulation for holding temperature for long time

**Available:** M.S. & S.S. with Gas / Charcoal Operated

**Dimensions:** 750x750x850  
800x800x850  
850x850x850  
900x900x850  
1050x1050x850



### Optional Accessories

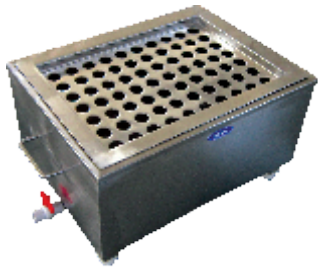


## Wagon Setup





*New Arrival*



Live Kulfi Counter-Table Top



Salad Bar



BBQ Station



Pizza Warmer



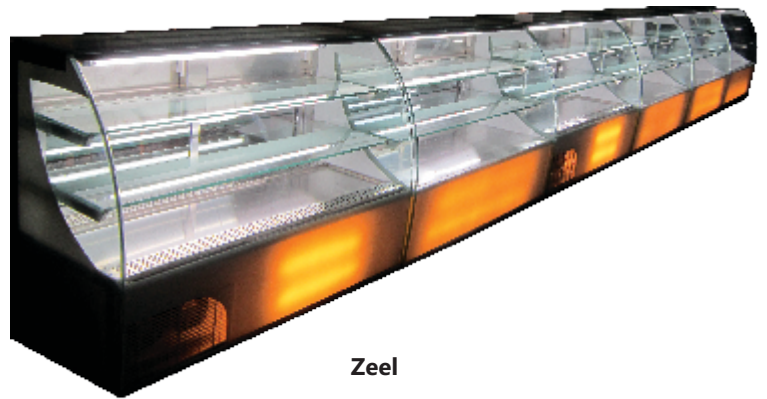
Popcorn Warmer



Bhaji Pav Trolley



Flat Glass Counter



Zeel



Gola Counter



Live Kulfi Trolley



Live Sweetcorn Trolley



Live BBQ Trolley



Live Dosa Trolley

***New Arrival***



**Multi Purpose Fast Food Trolley**



**Chapati Puffer**



**Live Catering Salad Bar**



**Live Dosa Trolley**



**Live Hot Plate with Induction**



**Linen Trolley**



**Live Kesar Milk Burner**



**Multi Purpose Live Counter**



**Live Dosa Trolley for Banquet**



**Catering Live BBQ Station**



## *Glimps of our Showroom*





## Valued Client

### Corporate Clients



### Hospitals



### Trusts & Temples



## Valued Client

### Schools / Colleges Clients



### Club & Resorts



## Valued Client

### Hotels





## Our International Collanoration

Brand supplied by us

**Scotsman**

**COLIBAR**

**Vita-Mix**  
FOODSERVICE

**HOBART**

**TAYLOR**

**DIER**  
INTERNATIONAL

**COLIBAR**

**STELLA**  
Induction Cookers

**RATIONAL**

**SIMONELLI**  
espresso coffee machines

**Amana**

machines  
**caplain**

**SISSA**

**Halton**  
CARE FOR INDOOR AIR

**Hatco**  
ELECTRUM

**SIRMAN**

**Ugolini**

**BEECH OVENS**

**BACCHUS**  
Syringes

**EXPOBAR**  
COFFEE MACHINES

**CookTek**  
MagnaWave Systems

**CARTER-HOFFMANN**

**YPT**

**BLODGETT**

**FOSTER**

**Perlick**

**BRAVILOR**  
**BONAMAT**

**WoodStone**

**QUEEN**

**MKN**

**GARLAND**

**sammic**

**Cleveland**

**Frymaster**

**WELLS**

**CECILWARE**





Planner, Manufacturers and Suppliers of Complete range of Commercial Kitchen, Catering, Food service and Bakery Equipment suitable for Hotels, Restaurants, Base Kitchens, Resorts, Fast Food Ventures, Industrial Canteens, Hospitals, Messes etc.

**We undertake complete planning and layout of kitchen with expertise and attend consultancy services to desiring customers.**

## RANGE OF PRODUCTS

### **(A) DISH WASH AREA**

1. Soiled Dish Table with Glass Rack
2. Prerinse sink unit
3. Three sink dish wash unit
4. Geysers
5. Clean dish table
6. Clean dish rack
7. Bussing trolley
8. Garbage drum
9. Garbage drum trolley
10. Cutlery sink (mobile)
11. Wall shelf

### **(B) POT WASH AREA**

1. Pot Wash Sink
2. Geysers
3. Pot Rack (Clean Pots)
4. Pot Rack (Soiled Pots)
5. S.S. Cladding (Drain)

### **(C) PANTRY**

1. Tea Boiler
2. Tea - Milk Dispenser
3. Milk Warmer
4. Coffee Machine
5. Salamander / Toaster
6. Juice Machine
7. Ice Cream Cabinet
8. Bottle Cooler
9. Reach in Refrigerator
10. Slicer
11. Dipenser Counters
12. Urn Counter
13. Sandwich Griller
14. Sandwich Counter
15. Working Tops with sink
16. Stop pot stove
17. Exhaust Hood with filter

### **(D) OUT DOOR KITCHEN**

1. Bar Bay Que counter
2. Gas Range
3. Gas Tandoor

### **(E) PREPARATION MACHINE**

1. Wet Masala Grinder
2. Potato Peeler
3. Meat Mincher
4. Dough Kneader
5. Vegetable Slicer
6. Pulvalizer
7. Finger Chips Machine
8. Pasta Machine
9. Coconut Screper

### **(F) TROLLEYS**

1. Plate from trolley
2. Two tyre trolley
3. Sink trolley

### **(G) STORAGE EQUIPMENT**

1. Vegetable Storage Rack
2. Slotted Angle Rack
3. Cold Storage Rack
4. Wall Shelf
5. Mobile Ingredients
6. Potato Peeler

### **(H) BAKERY & CONFECTIONERY**

1. Marble top table
2. Baking oven (Gas / Electric)
3. Prooving cabinet
4. Pizza oven
5. Planetary mixer
6. Flour / Sugar Bin
7. Bread Slicer
8. Flour Sifter
9. Stock Pot Stove
10. Working Table with sink
11. Exhaust Hood with Filter

### **(I) COOKING SECTION**

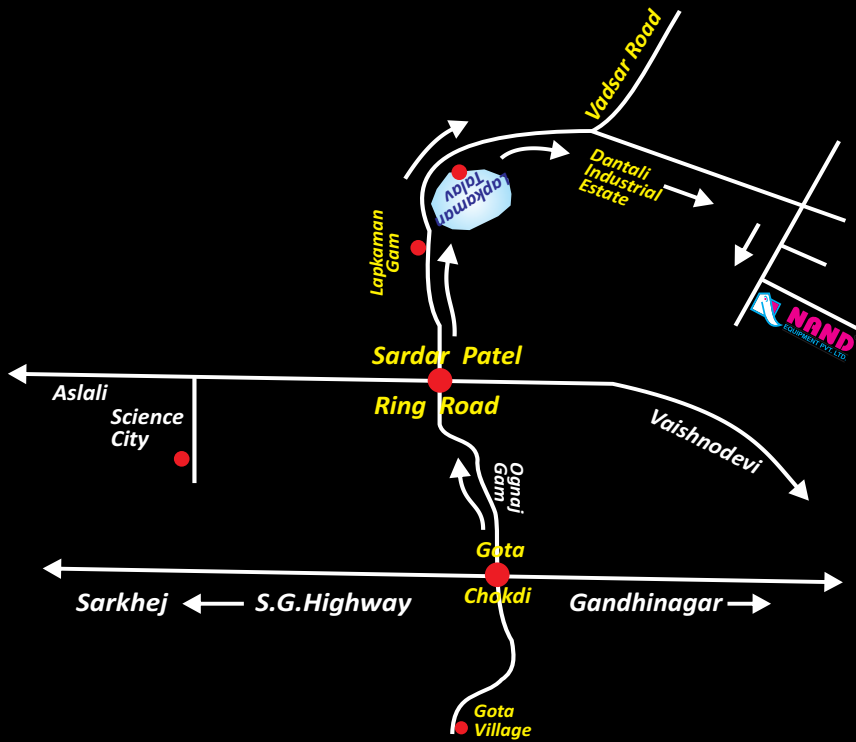
1. Gas Cooking Range
2. Chappati Plate cum Puffer
3. Chappati Rolling Table
4. Griddle Top / Dosa Plate
5. Idli Steamer
6. Chinese Cooking Range
7. Deep Fat Fryer
8. Continental Gas Cooking Range with oven underneath
9. Tilting Brate Pan
10. Bulk Cooker
11. Stock Pot Stoves
12. Gas Grill
13. Preparation table with sink and undershelf
14. Exhaust hood with filter
15. Gas Tandoor

### **(J) SERVICE SECTION**

1. Bain Maries (Open & Closed Top)
2. Service Counter with hot case dish storage shelves
3. Plain pick up counter with overhead shelf and tray slide with dish storage underneath
4. Hot Food Service Trolley
5. Tea Service Trolley
6. Pastry Trolley



**NAND**<sup>®</sup>  
EQUIPMENT PVT. LTD.



Survey No. 194/5, Dantali Industrial Estate, Gota-Vadsar Road,  
Nr. Ahmedabad, At. Dantali, Ta. Kalol-382721, Gujarat, INDIA.  
Phone : +91-2764-248373, +91-2764-248374  
Mobile : +91-9825152455, +91-9712952455  
Email : nand\_counter@yahoo.com, info@nandequipment.com  
Website : www.nandequipment.com